

# The Forest Park



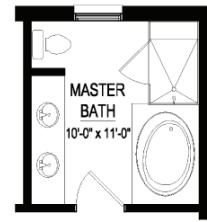
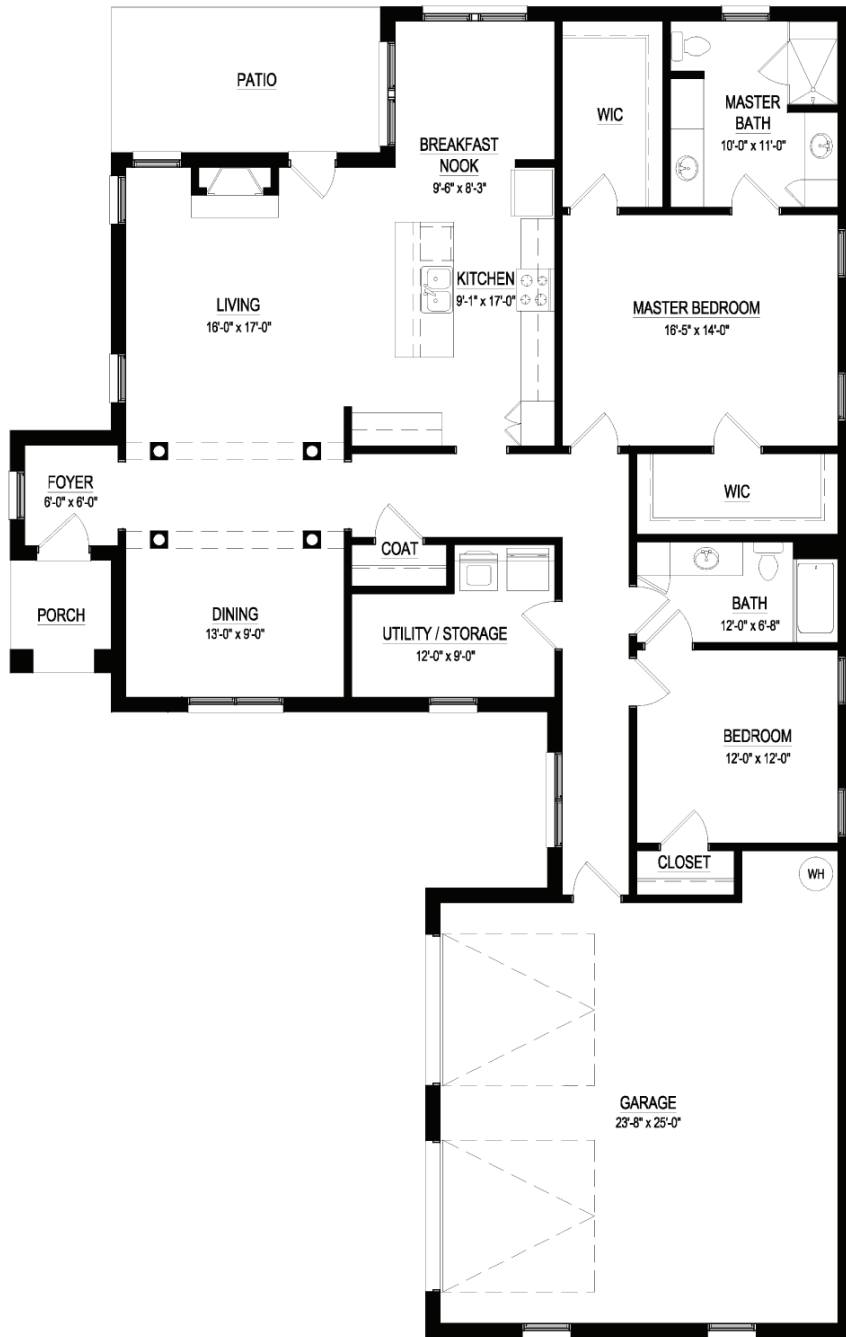
**Danberry**  
AT INVERNESS

Distinctively Different Retirement Living

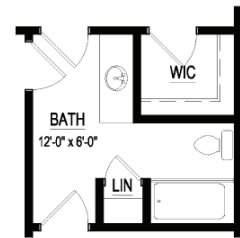
[danberryatinverness.com](http://danberryatinverness.com) | 205.981.6679



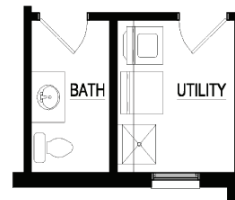
DANIEL DANIEL  
CORPORATION HOMES



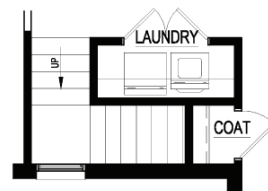
**MASTER BATH OPTION**



**DOUBLE MASTER BATH OPTION**



**1/2 BATH OPTION**



**2ND FLOOR OPTION**

CONTINENTAL SERIES

*The Forest Park*

Conditioned Area = 1,856 SQ. FT.

Garage Area = 623 SQ. FT.